

# **CHARTING : THE BASIC TOOL**

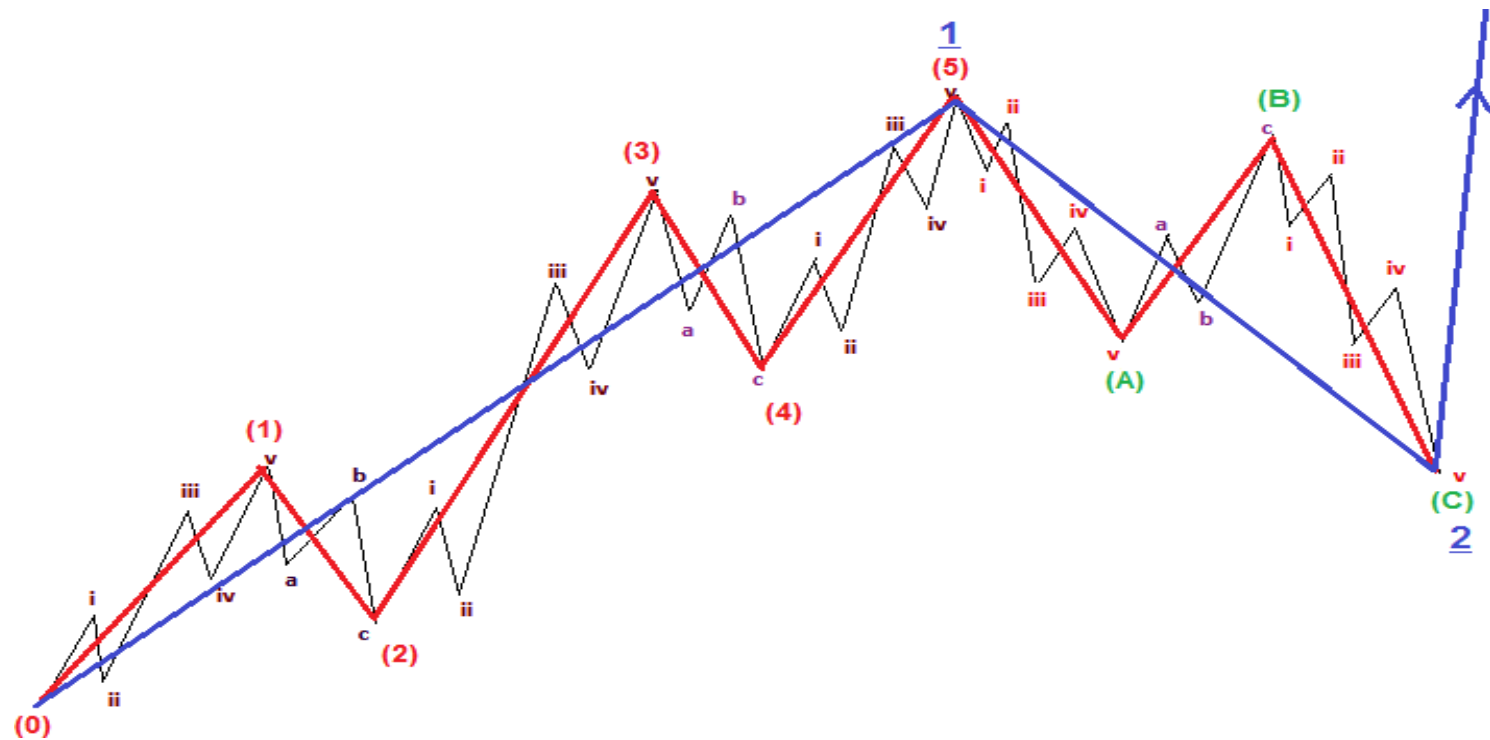
- Motive of identifying price trends based on historical data.
- Trend used to forecast future behaviour.
- Used for either a particular security or market in general.
- Both price and volume data are studied simultaneously for both (security as well as the market).

# **ELLIOT WAVE THEORY**

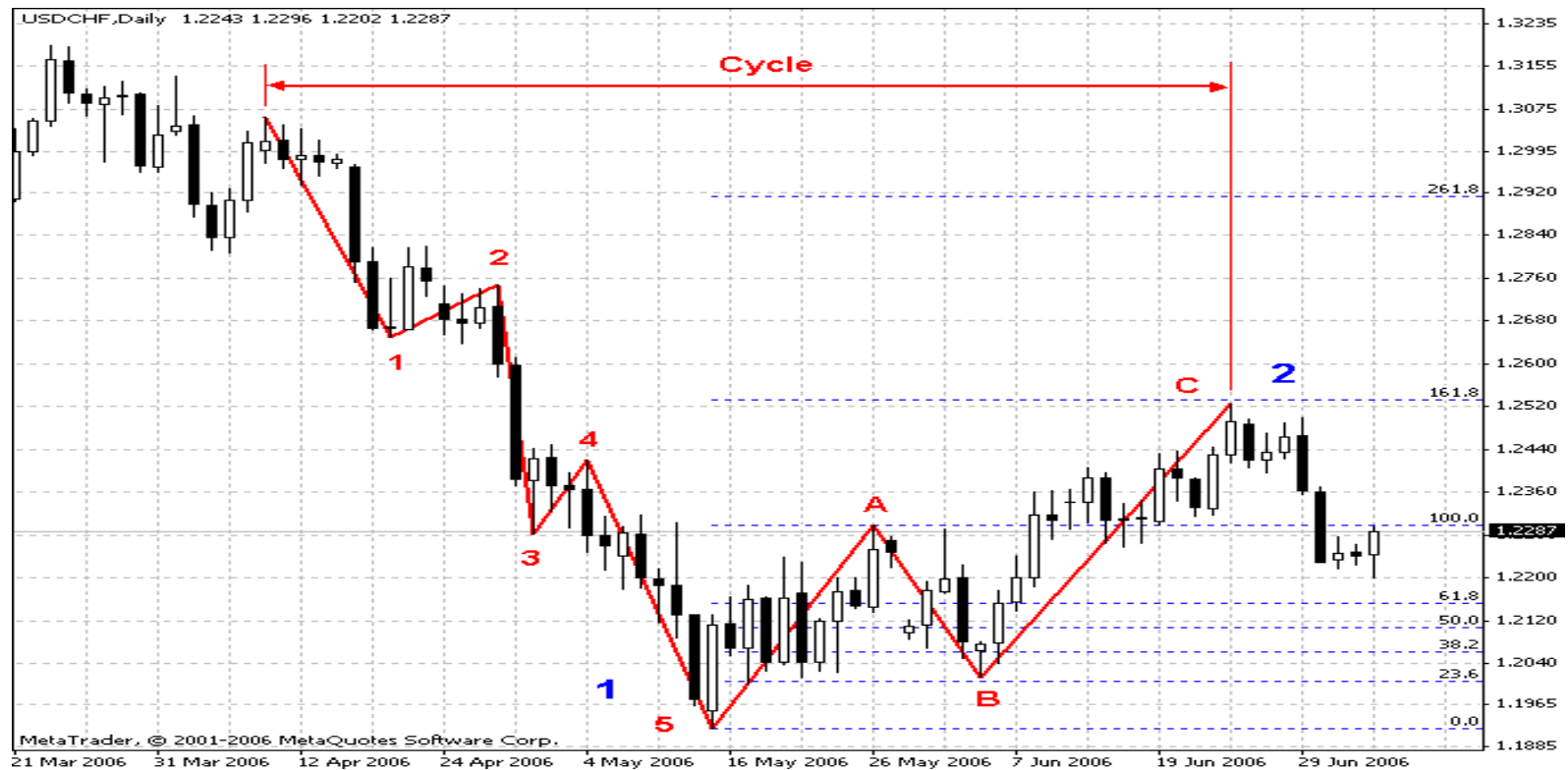
- Developed by Ralph Nelson Elliot.
- Theory states that the long term major patterns may consist of five successive steps or five waves.
- Types of market
  - Bull market
  - Bear market



# ELLIOT WAVE THEORY IN BULL MARKET



# ELLIOT WAVE THEORY IN BEAR MARKET



# REAL LIFE EXAMPLE

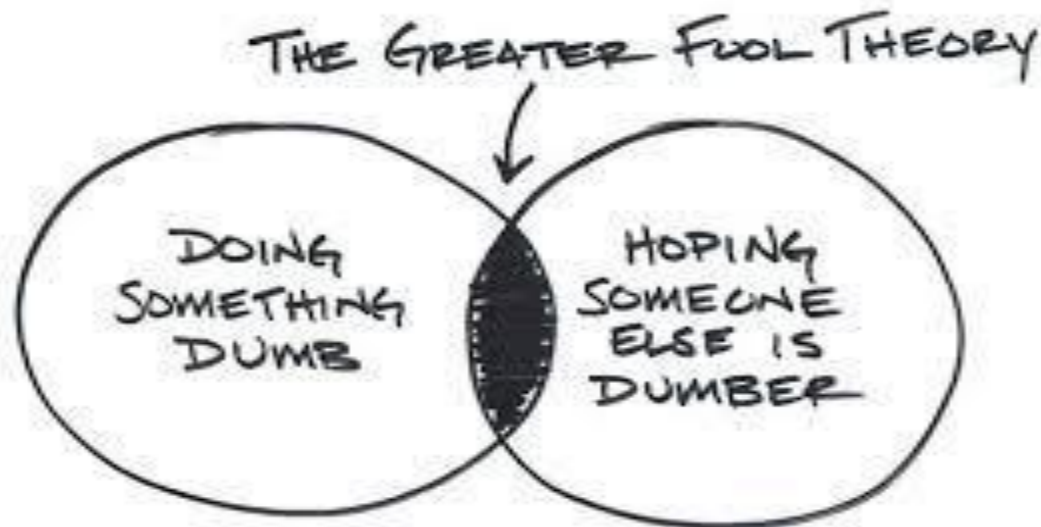
**AXIS Bank Ltd.** 379.95 +2.25 (+0.60%)

0 - 369.05	A - 393.80
1 - 383.15	B - 412
2 - 371	C - 370.25
3 - 407.35	
4 - 390.11	
5 - 423.80	



# **GREATER FOOL THEORY**

The belief that we can always buy investments at any given price, setting aside valuations, and eventually turning them into a profit because there will always be a “Greater Fool” willing to pay the higher price.



# PRICE CHARTS

- Opening price
- High price
- Low price
- Closing price



# BAR CHARTS

- This is a popular technique of showing the price variation and volume on a particular day.
- The chart is made up of a series of vertical lines that represent each data point.
- This vertical line represents the high and low for the trading period, along with the closing price.
- The close and open are represented on the vertical line by a horizontal dash.



Overlays

Indicators

Draw

Chart Type

Events



Mon, 28 Mar 2016



SBI

▼ 188.30 -8.30 (-4.22%)

VOLUME  
1,97,60,603

OPEN  
195.80

HIGH  
198.25

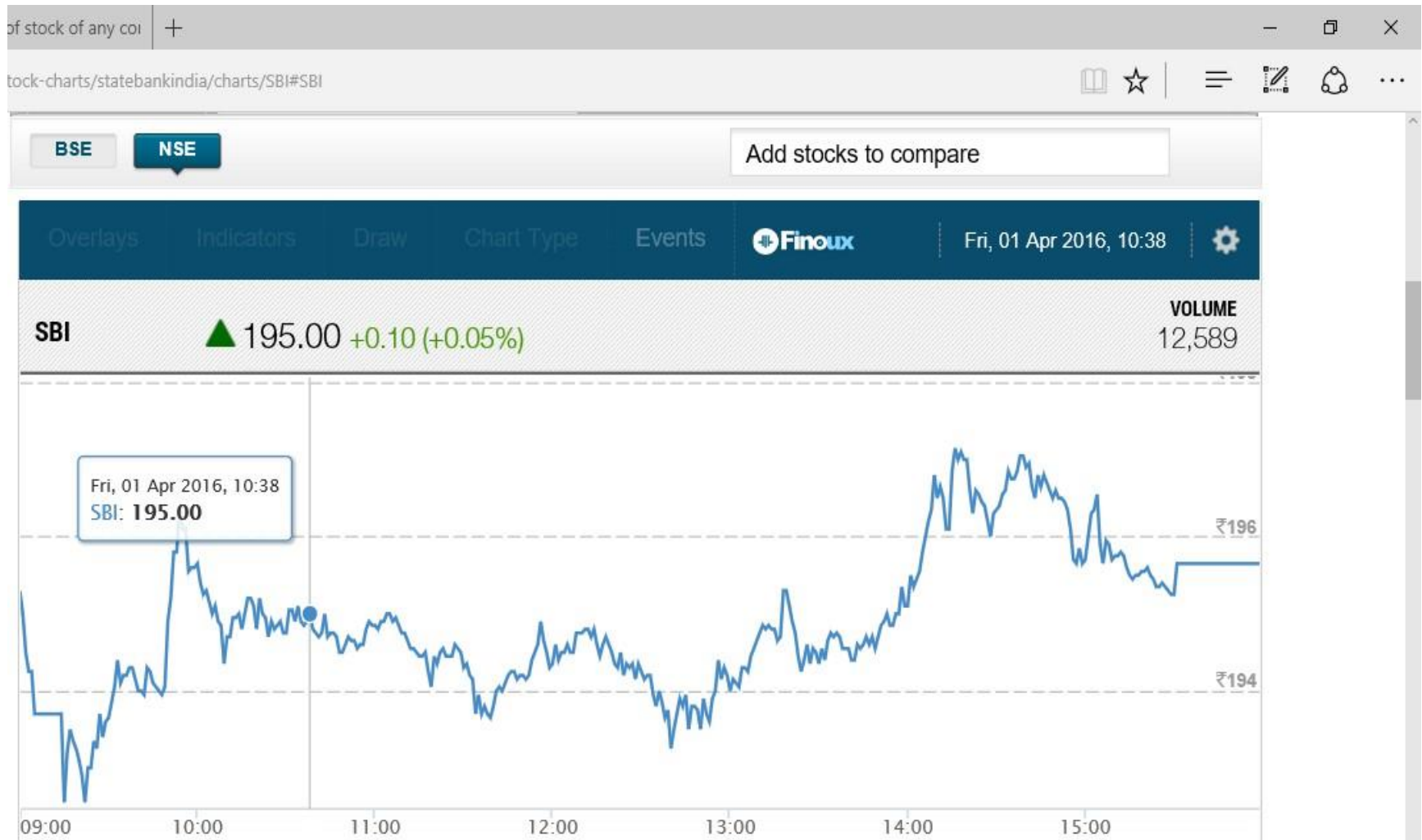
LOW  
187.65



# LINE CHART

- Line chart represents any variable over a set period of time.
- The line is formed by connecting value of represented variable over the time frame.
- Line charts do not provide visual information of the trading range for the individual points such as the high, low and opening prices and closing price.
- They depict any variable like volume of a security, index number, price etc .

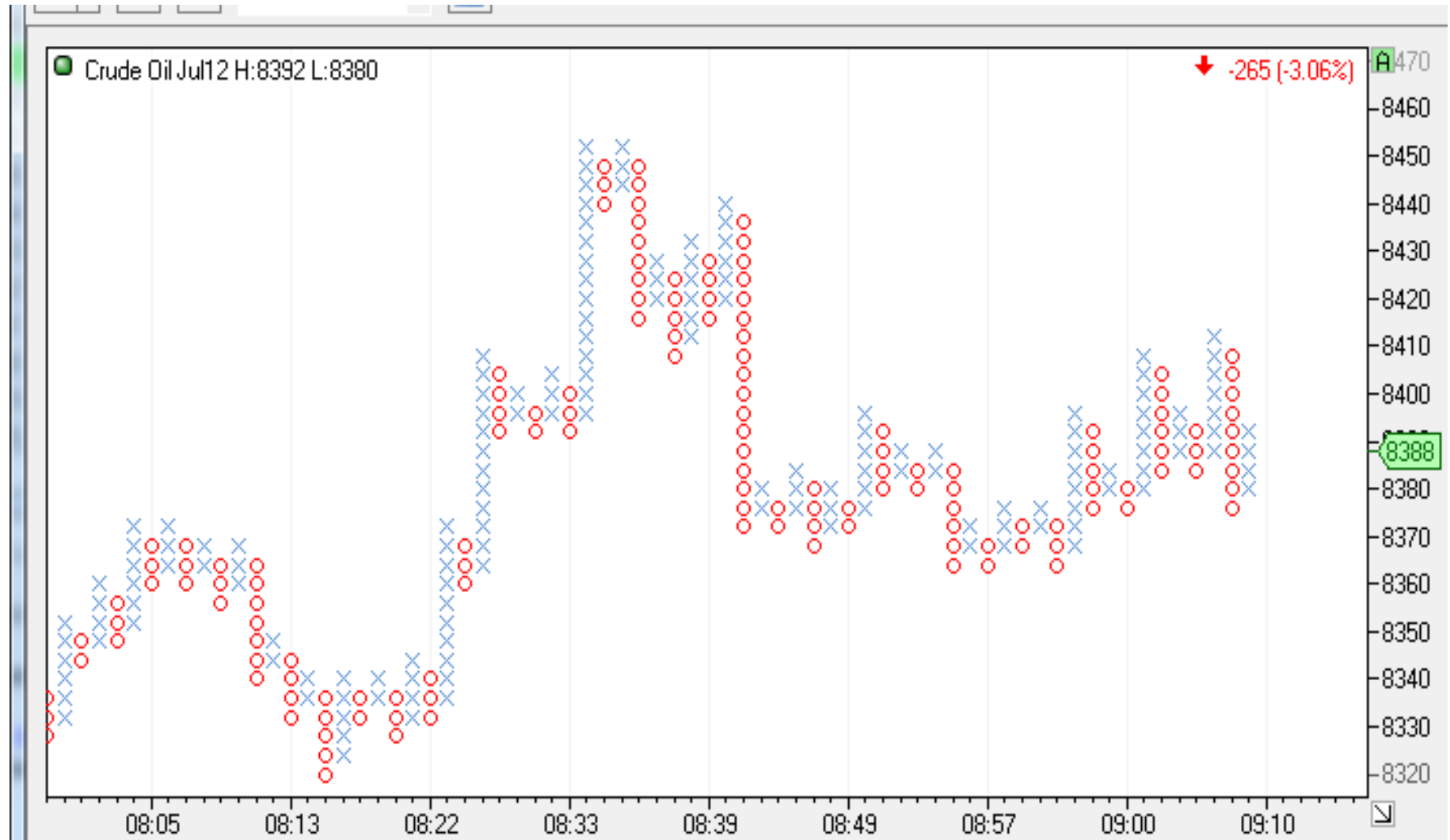
# Example for Line chart



# POINT AND FIGURE CHART

- The point and figure chart is not well known or used by the average investor but it has had a long history of use dating back to the first technical traders.
- This type of chart reflects price movements and is not as concerned about time and volume in the formulation of the points.
- In order to prepare this type of graph ,the analyst has to decide as to what is a significant price change .
- It uses a chart with "X"s and "O"s for predicting financial asset prices. The "X"s are used to indicate rising prices and "O"s to indicate falling prices

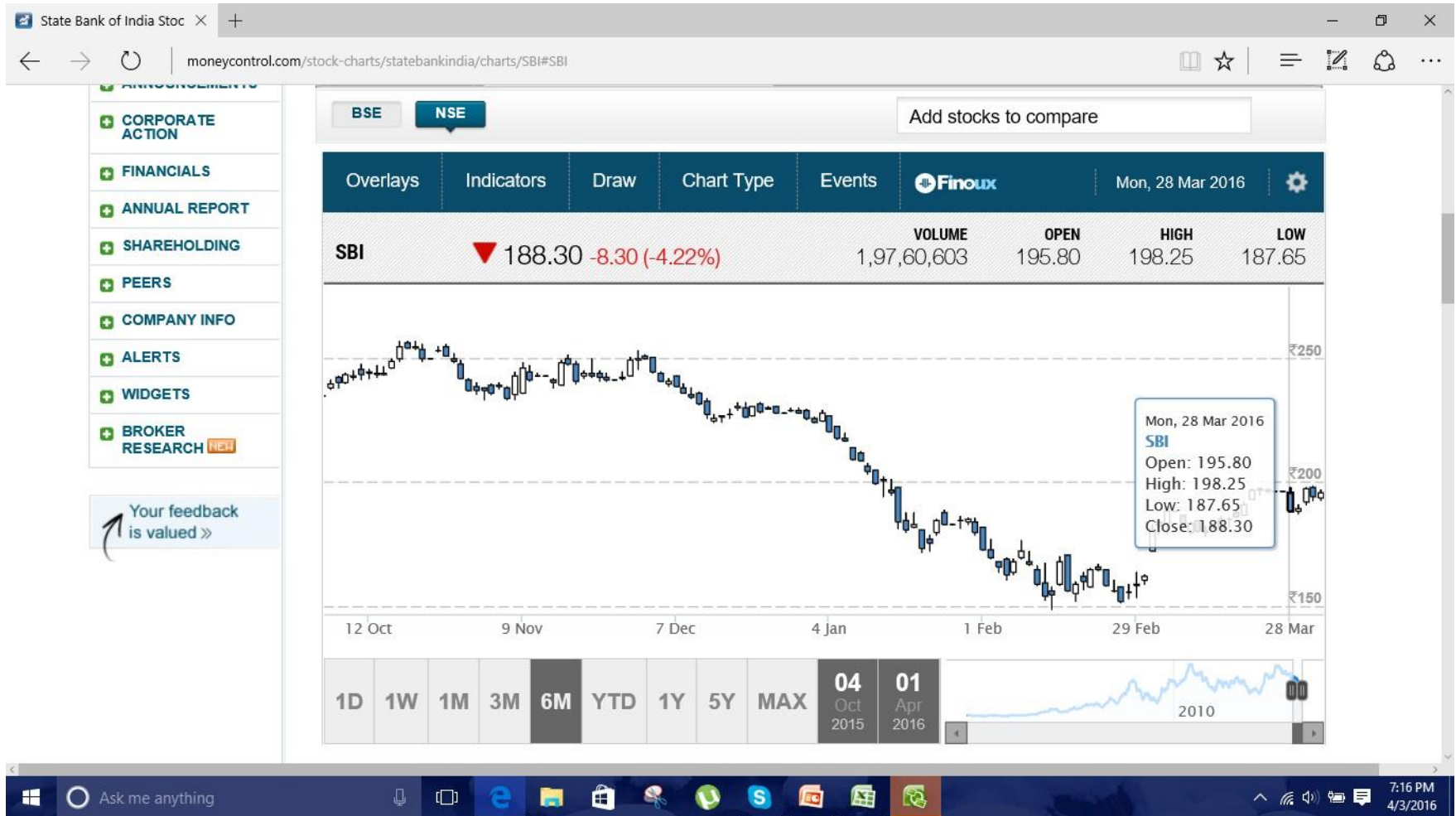
# Example for Point and Figure chart



# CANDLESTICK CHART

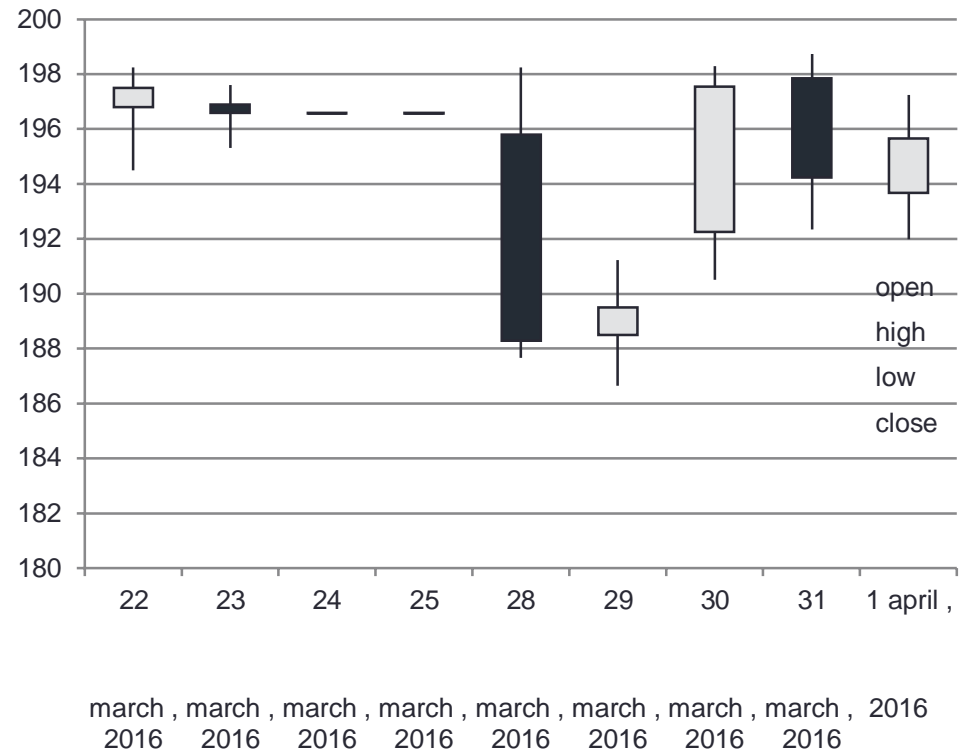
- Similar to the bar chart, the candlestick also has a thin vertical line showing the period's trading range.
- Candlesticks rely heavily on the use of colors to explain what has happened during the trading period. There are two color constructs for days up and one for days that the price falls.
- When the price of the stock is up and closes above the opening trade, the candlestick will usually be white or clear. If the stock has traded down for the period, then the candlestick will usually be red or black.
- If the stock's price has closed above the previous day's close but below the day's open, the candlestick will be black or filled with the color that is used to indicate an up day.

# Example for Candlestick chart



# Example for Candlestick chart

date	open	high	low	close
22 march , 2016	196.8	198.25	194.5	197.5
23 march , 2016	196.9	197.6	195.3	196.6
24 march , 2016	196.6	196.6	196.6	196.6
25 march , 2016	196.6	196.6	196.6	196.6
28 march , 2016	195.8	198.25	187.65	188.3
29 march , 2016	188.5	191.25	186.65	189.5
30 march , 2016	192.25	198.3	190.5	197.55
31 march , 2016	197.85	198.75	192.35	194.25
1 april , 2016	193.7	197.25	192	195.65



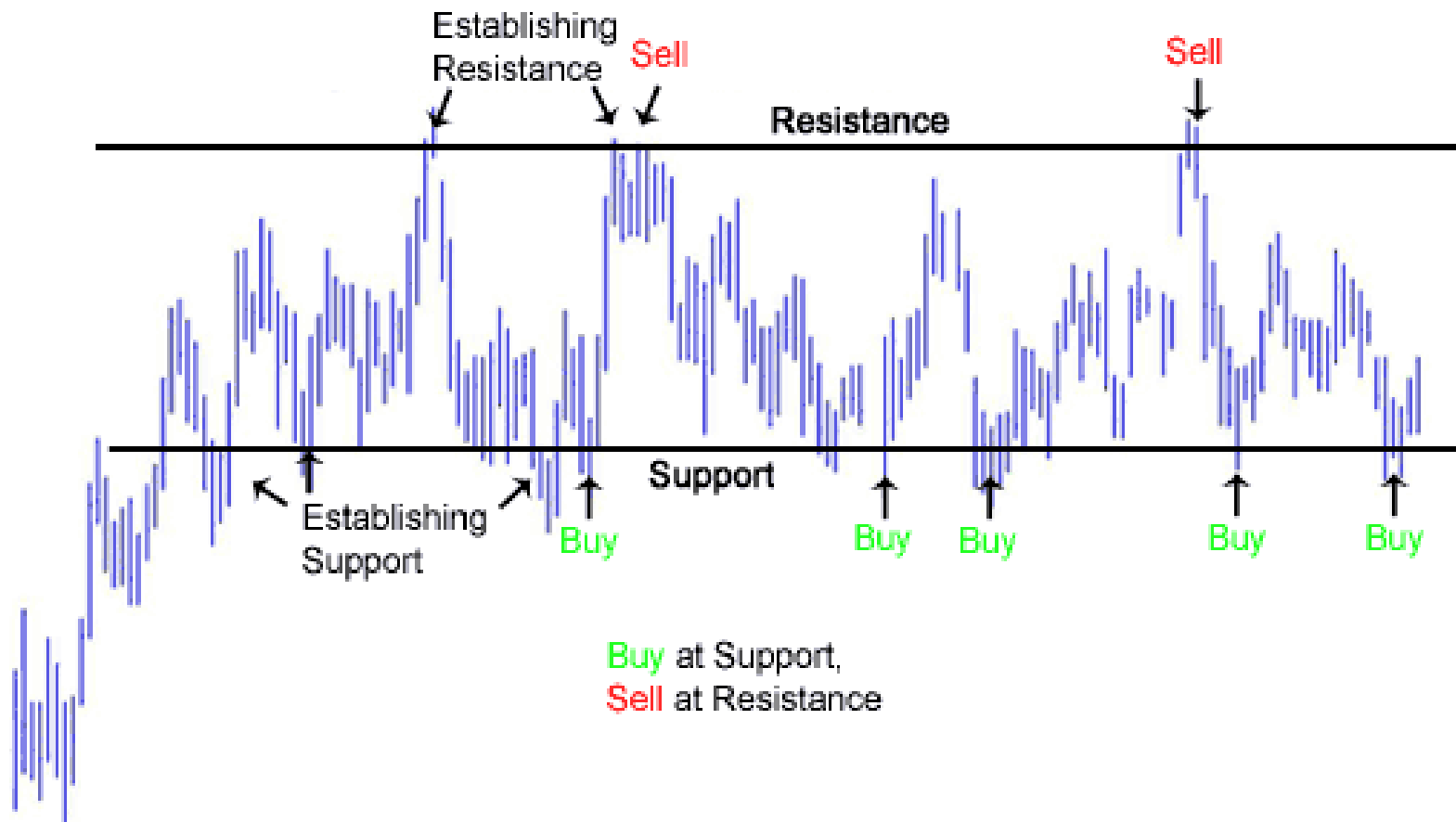


# SUPPORT AND RESISTANCE LEVELS

- Support is the price level at which demand is thought to be strong enough to prevent the price from declining further.
  - The logic dictates that as the price declines towards support and gets cheaper, buyers become more inclined to buy and sellers become less inclined to sell.
- Resistance is the price level at which selling is thought to be strong enough to prevent the price from rising further.
  - The logic dictates that as the price advances towards resistance, sellers become more inclined to sell and buyers become less inclined to buy.

# Support & Resistance

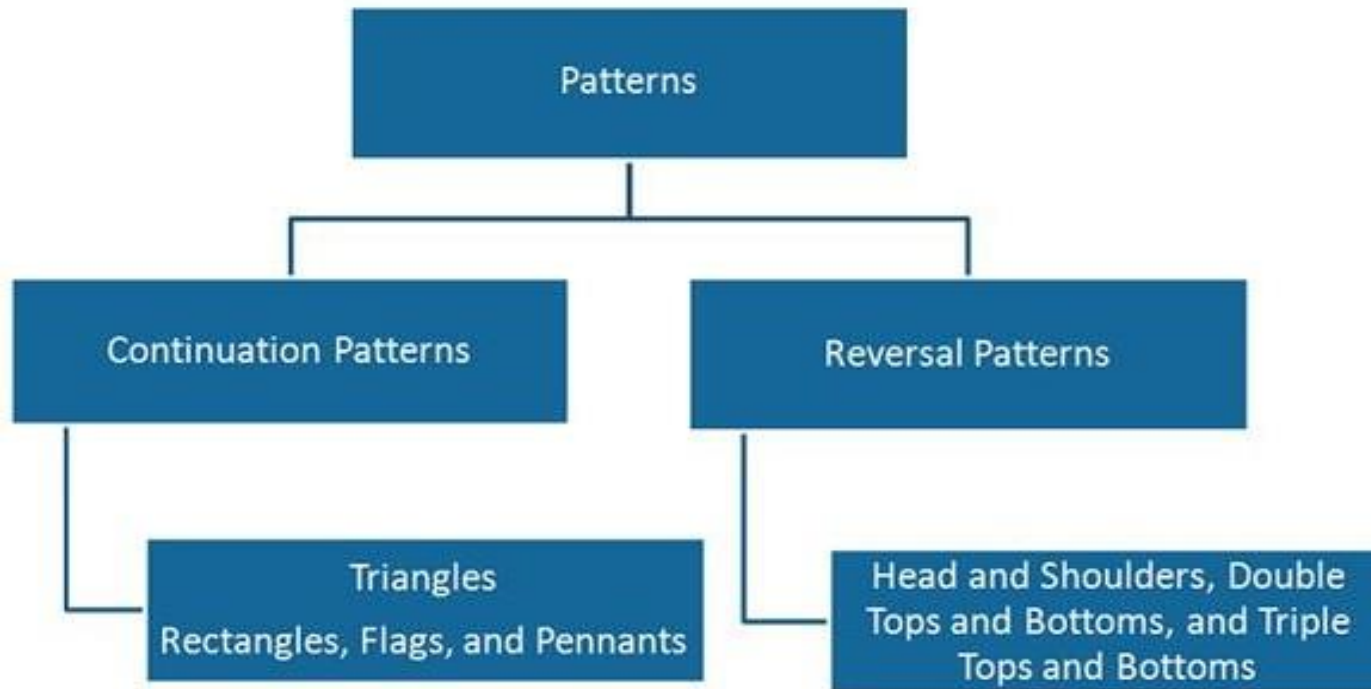
Daily Chart - Semiconductor HOLDERS (SMH)



# REVERSAL PATTERNS AND CONTINUATION PATTERNS

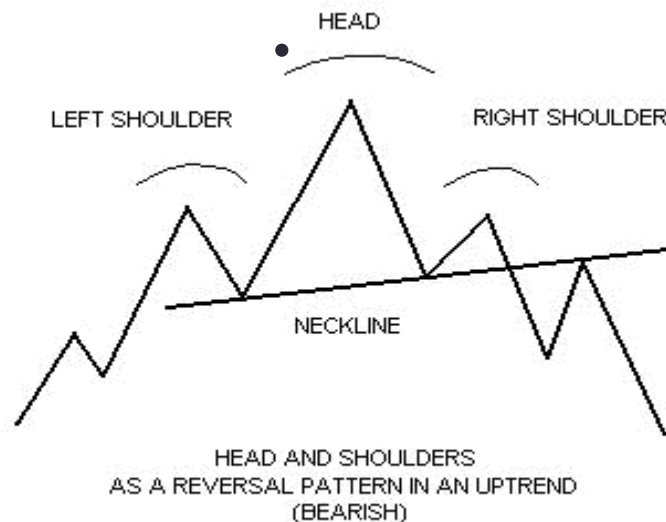
- The reversal patterns are those which indicate a reversal of existing trend.
- It can further be classified as bullish patterns or bearish patterns.
- The continuation patterns suggest that there is only a pause in the market and the old trend will continue again after the pause.

## Types of Patterns



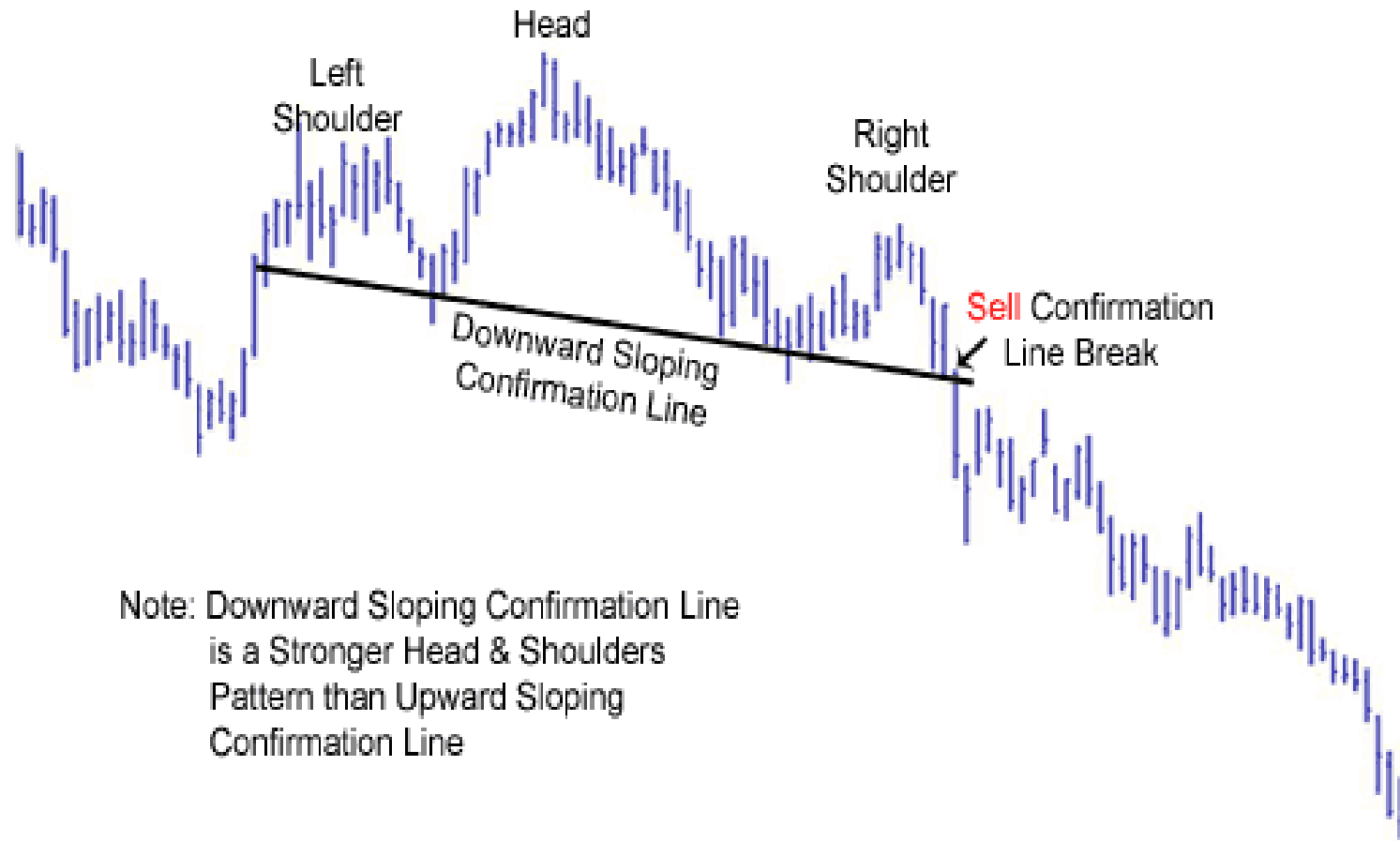
# HEAD AND SHOULDER

- The head-and-shoulders top signals to chart users that a security's price is likely to make a downward move, especially after it breaks below the neckline of the pattern.
- Due to this pattern forming mostly at the peaks of upward trends, it is considered to be a trend-reversal pattern, as the security heads down after the pattern's completion.



# Head & Shoulders

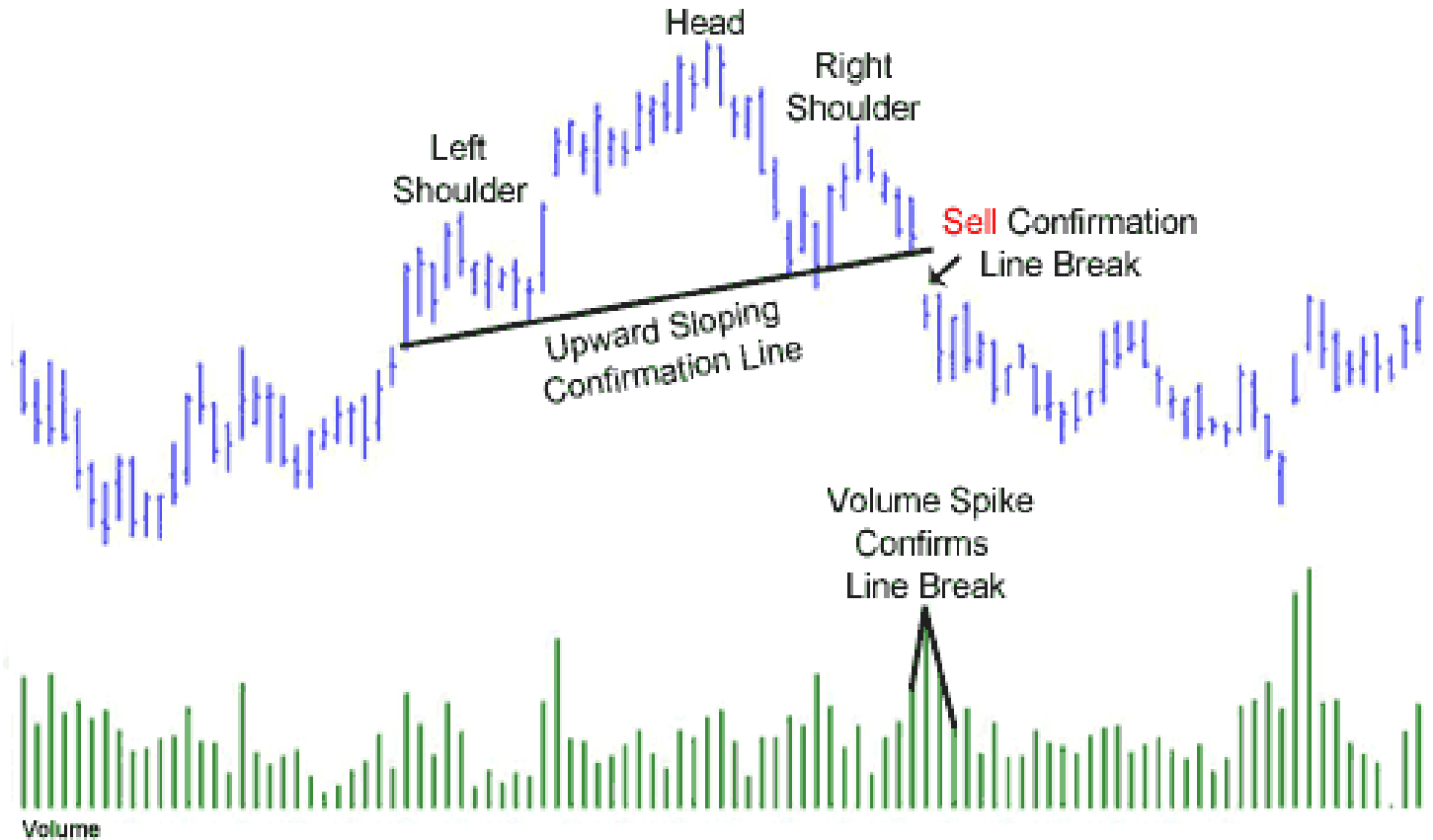
Daily Chart - Home Depot (HD)



Note: Downward Sloping Confirmation Line  
is a Stronger Head & Shoulders  
Pattern than Upward Sloping  
Confirmation Line

# Head & Shoulders

Daily Chart - General Electric (GE)



# INVERTED HEAD AND SHOULDER

- The inverted head-and-shoulders pattern is the exact opposite of the head-and-shoulders top, as it signals that the security is set to make an upward move.
- Often coming at the end of a downtrend, the inverse head and shoulders is considered to be a reversal pattern, as the security typically heads higher after the completion of the pattern.



# Head & Shoulders Reversal

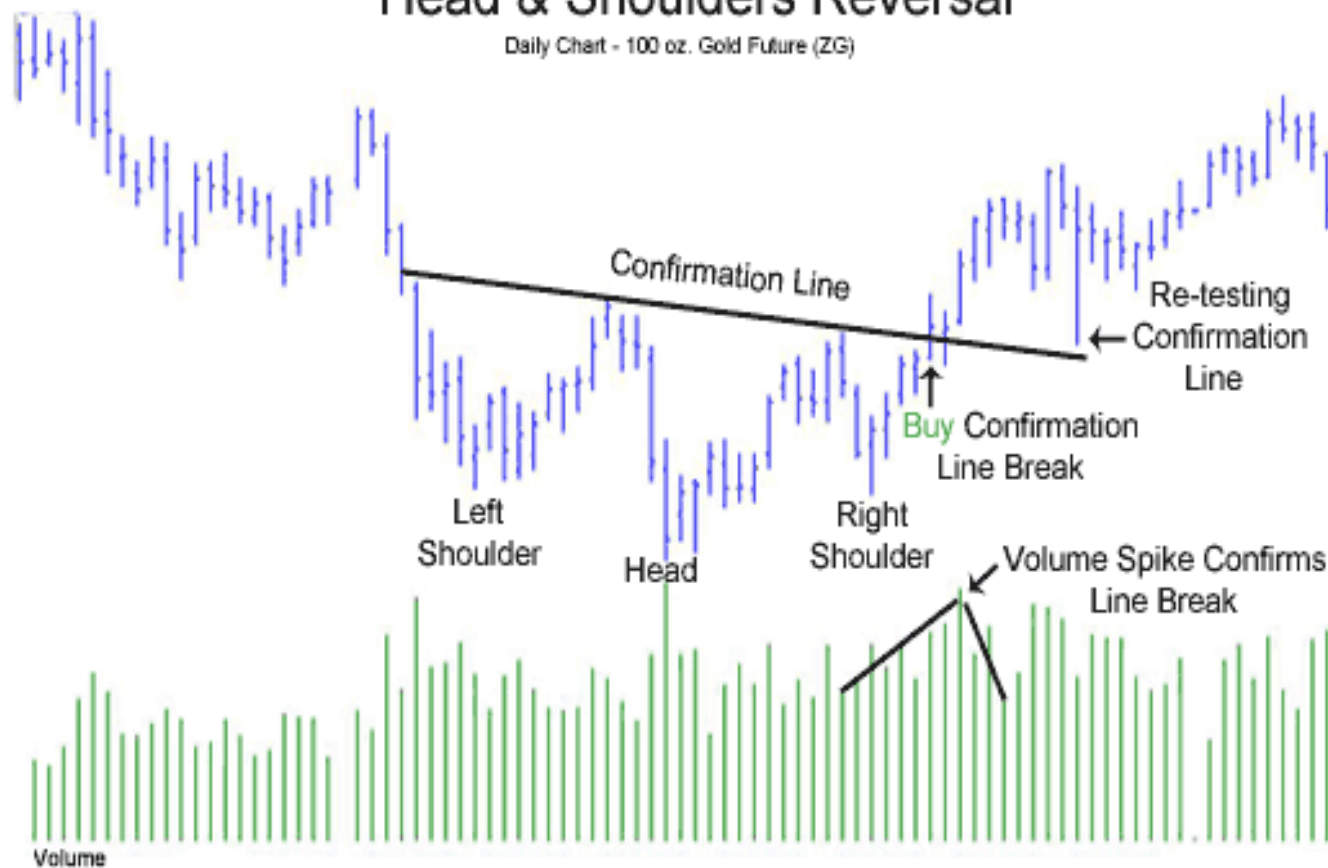
Daily Chart - E-mini Russell 2000 Future (ER2)

A Rising Confirmation Line  
is a Stronger Head &  
Shoulders Reversal Pattern  
than a Decreasing  
Confirmation Line



# Head & Shoulders Reversal

Daily Chart - 100 oz. Gold Future (ZG)



# DOUBLE TOPS AND BOTTOMS

- These two reversal patterns illustrate a security's attempt to continue an existing trend.
- Upon several attempts to move higher, the trend is reversed and a new trend begins. These chart patterns formed will often resemble what looks like a "W" (for a double bottom) or an "M" (double top).

# DOUBLE TOP

- The double-top pattern is found at the peaks of an upward trend and is a clear signal that the preceding upward trend is weakening and that buyers are losing interest.
- Upon completion of this pattern, the trend is considered to be reversed and the security is expected to move lower.

# Double Top

Daily Chart - Altria (MO)



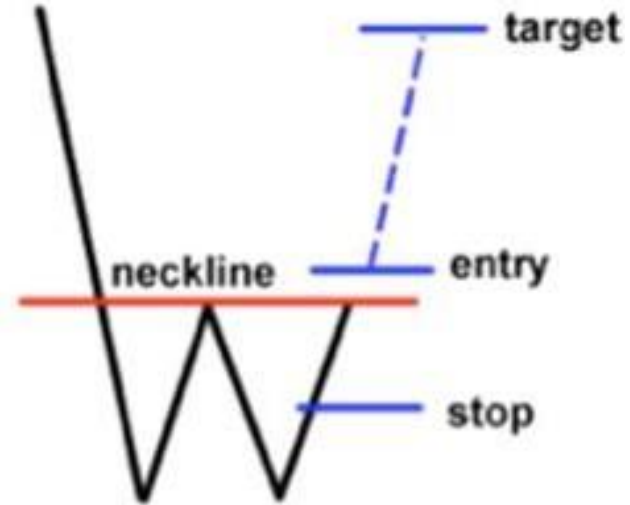
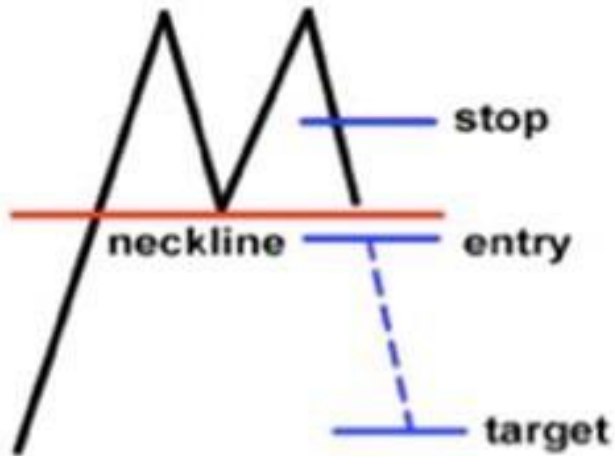
# DOUBLE BOTTOM

- A double bottom appears when a share hits a low, comes higher, again pulls back.
- A double bottom appears at the end of a bearish trend and indicates the start of the bullish trend.

# Price Trend, First Trough, Peak , Second Trough Advance From Trough, Resistance Break, Resistance Turned Support, Price Target.



# STRATEGIES



**Double Top and Double Bottom**



# GAPS

- Gaps occur when a price opens much higher (gap higher) or lower (gap lower) than the previous day's close.
- Once a gap occurs, the new price represents an important price level. Gaps higher create support that should allow the stock to move higher and gaps lower create resistance that should pressure the stock lower.
- Until the gap is violated, we should assume the trend will continue in the gap's direction.

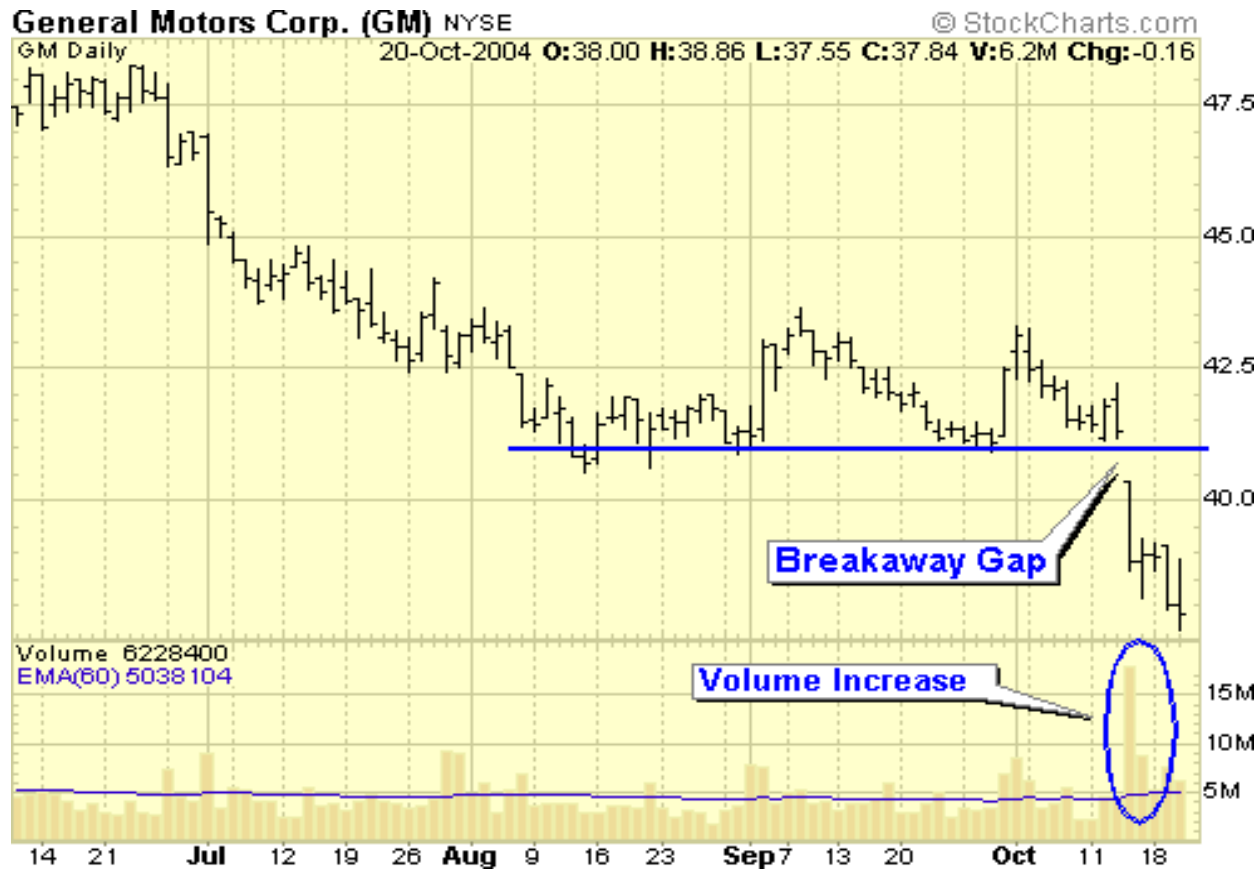
# Gaps



# BREAKAWAY GAPS

- They occur when the price action is breaking out of their trading range or congestion area.
- A *congestion area* is just a price range in which the market has traded for some period of time, usually a few weeks or so.
- To break out of these areas requires market enthusiasm and, either, many more buyers than sellers for upside breakouts or more sellers than buyers for downside breakouts.

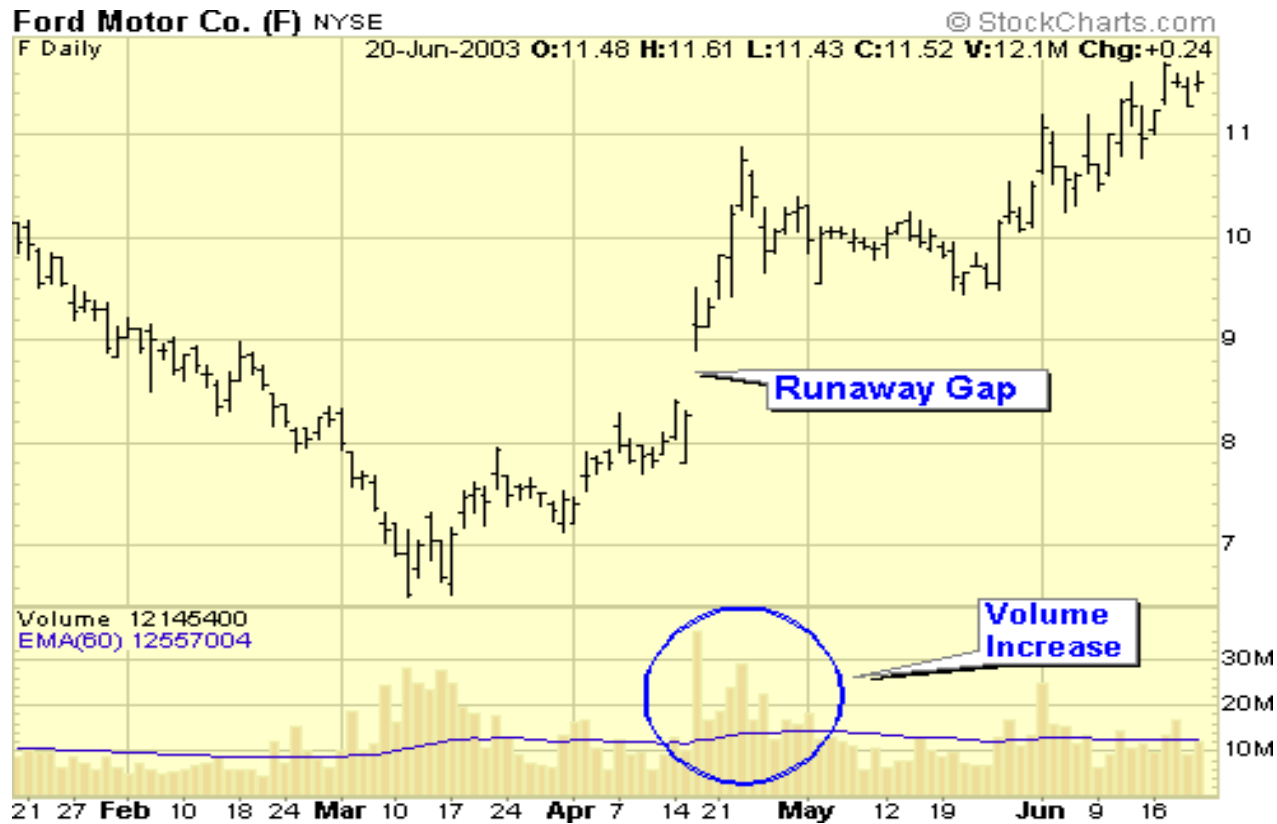
# Breakaway Gaps



# **RUNAWAY GAPS**

- ❖ Runaway gaps are also called measuring gaps, and are best described as gaps that are caused by increased interest in the stock.
- ❖ For runaway gaps to the upside, it usually represents traders who did not get in during the initial move of the up trend and while waiting for a retracement in price, decided it was not going to happen.
- ❖ Increased buying interest happens all of a sudden, and the price gaps above the previous day's close. This type of runaway gap represents an almost panic state in traders.

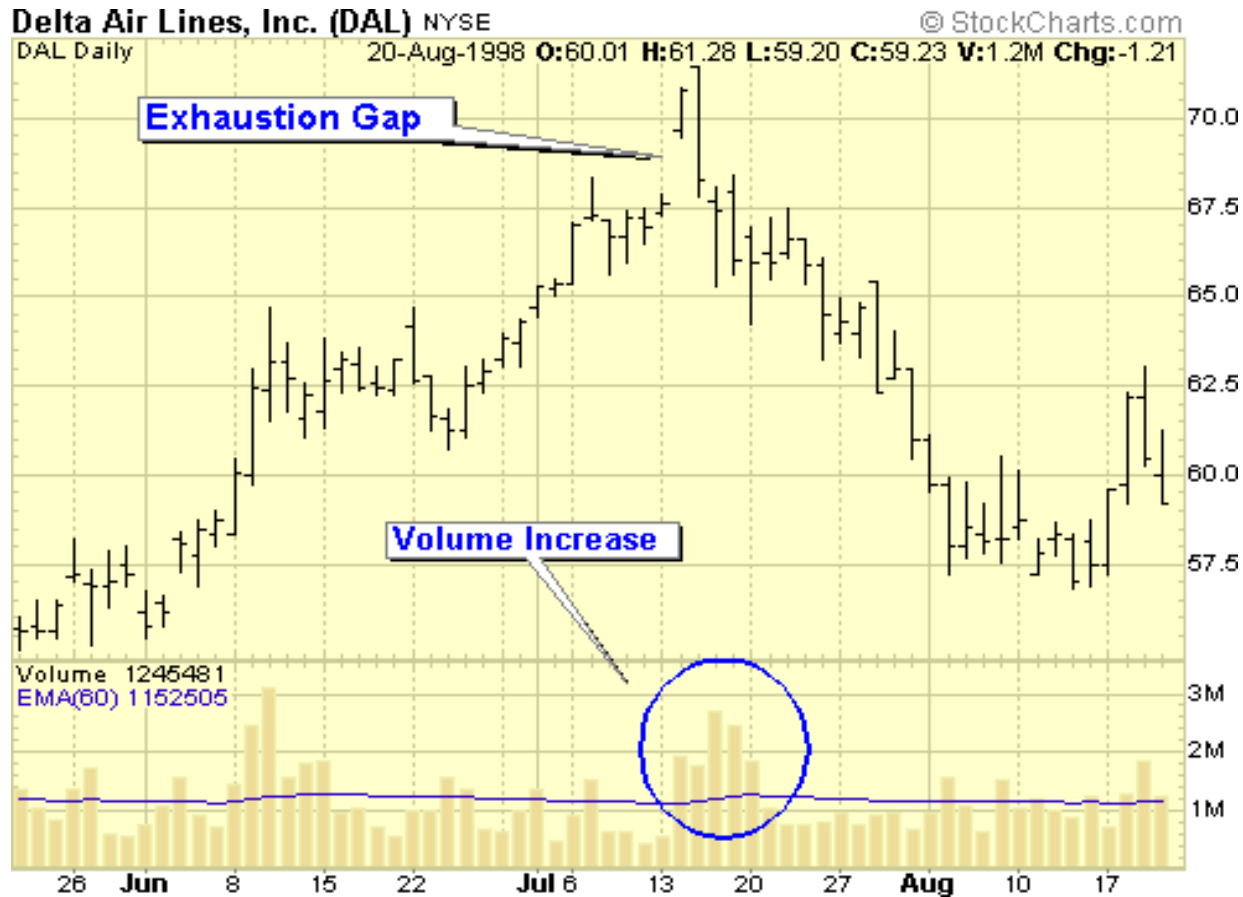
# Runaway Gaps



# EXHAUSTION GAPS

- Exhaustion gaps are those that happen near the end of a good up- or downtrend. They are many times the first signal of the end of that move.
- They are identified by high volume and large price difference between the previous day's close and the new opening price. They can easily be mistaken for runaway gaps if one does not notice the exceptionally high volume.

# Exhaustion Gaps

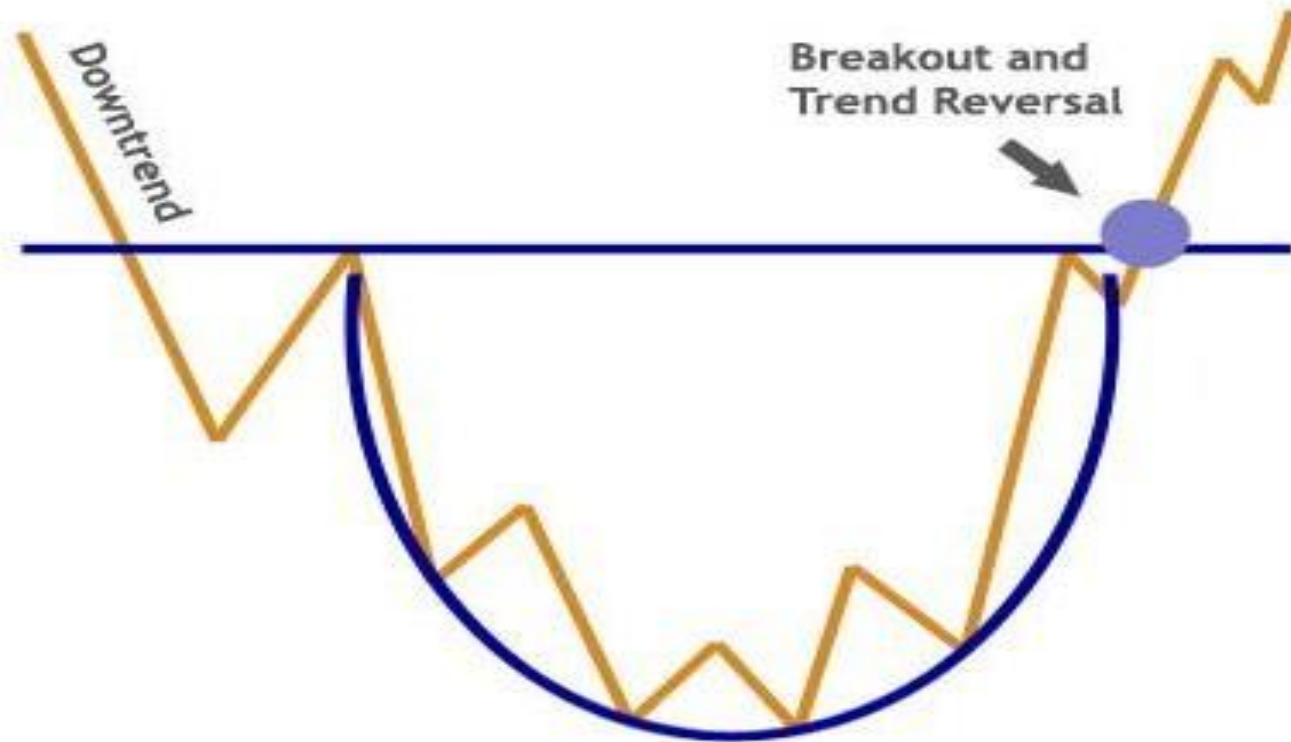




# ROUNDING BOTTOM

- The Rounding Bottom is a long-term reversal pattern that is best suited for weekly charts.
- It is also referred to as a saucer bottom, and represents a long consolidation period that turns from a bearish bias to a bullish bias.

# Rounding bottom



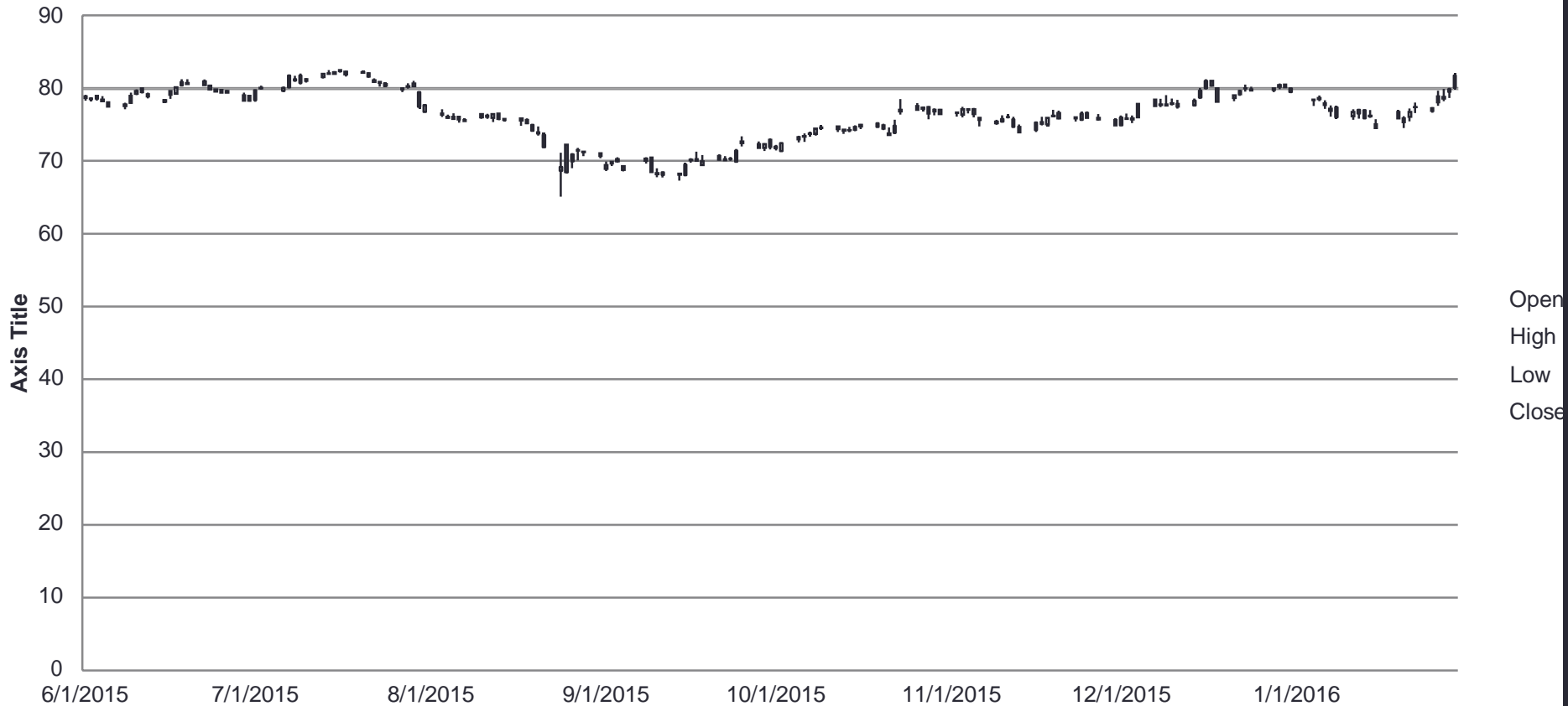
# THE CUP AND THE HANDLE

- The Cup with Handle is a bullish continuation pattern that marks a consolidation period followed by a breakout.
- As its name implies, there are two parts to the pattern: the cup and the handle.
- The cup forms after an advance and looks like a bowl or rounding bottom.
- As the cup is completed, a trading range develops on the right hand side and the handle is formed.
- A subsequent breakout from the handle's trading range signals a continuation of the prior advance.

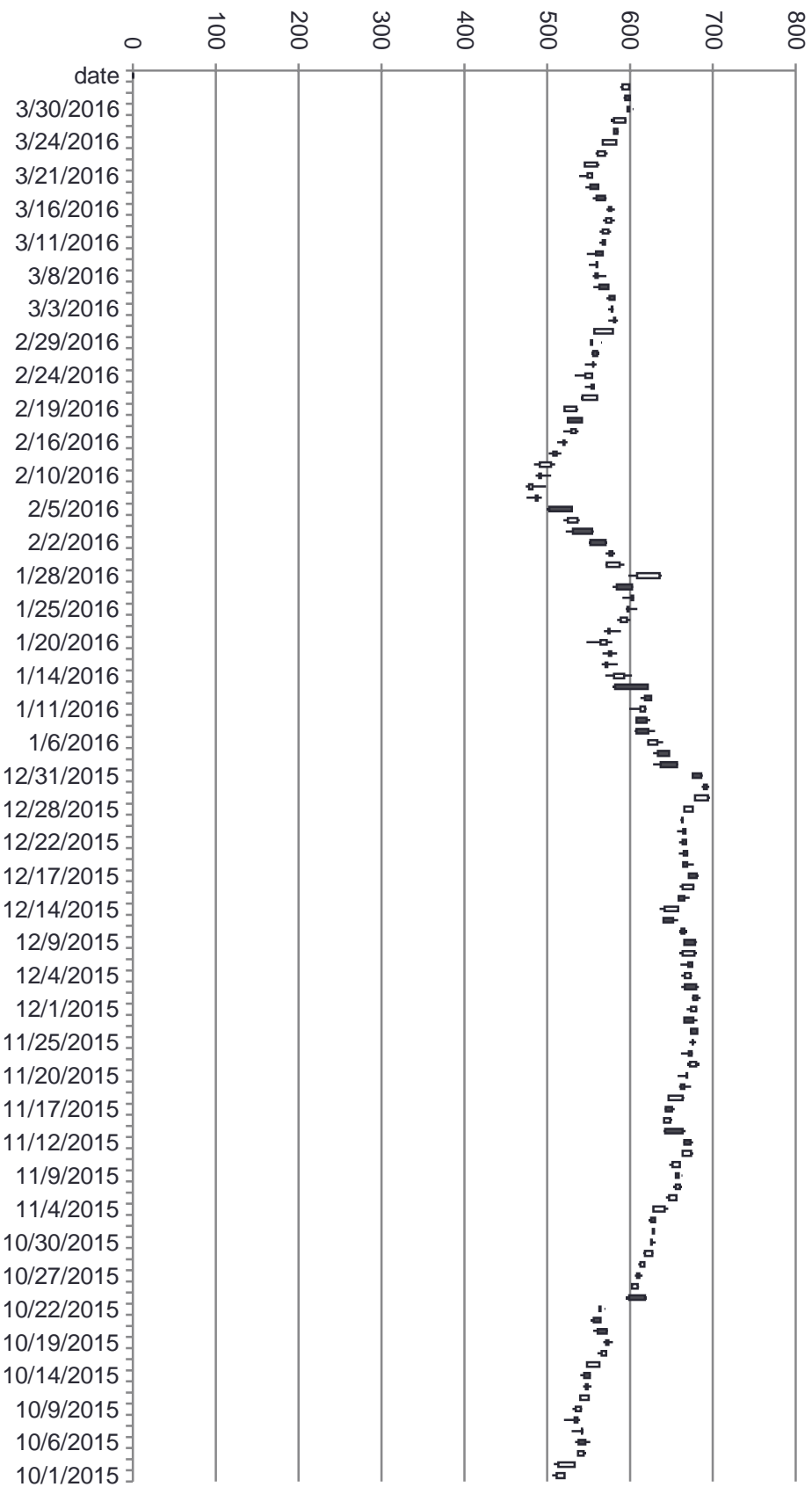
# The cup and the handle



# Procter and Gamble stock chart



# Amazon stock price chart



# TRIANGLES

- A triangle is formed when each succeeding peak is lower than the previous peak
- Or each succeeding bottom is higher than the previous bottom
- The series of peaks and bottoms are joined by a line which converges and form a shape of triangle.

# SYMMETRIC TRIANGLE





# ASCENDING TRIANGLES: (BULLISH)



# DESCENDING TRIANGLE: (BEARISH)

Dupont Co. (DD) NYSE

30-Oct-1997 Open 52.60 High 53.78 Low 51.77 Close 53.07 Volume 3.8M Chg -0.47 ▼

© StockCharts.com



# **FLAGS**

- A flag pattern appears when a bull rally or a bear phase is interrupted by a consolidation pattern appearing as a rectangle or a parallelogram.
- As the flag formation indicates a pause before continuation of earlier trend, the prices move in the same direction after the flag as before.

# PARALLELOGRAM FLAG



# INDICATOR ANALYSIS

- It's a mathematical examination of price and volume information over a given period.
- Objective: To predict where and in which direction the price may move in near future
- Attempts to establish a mathematical relationship of current price past prices.

# MOVING AVERAGES

- It refers to average level of closing prices, calculated on regular basis.
- A sequence of averages is calculated by calculating averages on daily basis.

## Simple Moving Average (SMA)

Daily Chart - Dow Jones Industrial Average ETF (DIA)



www.OnlineTradingConcepts.com - All Rights Reserved

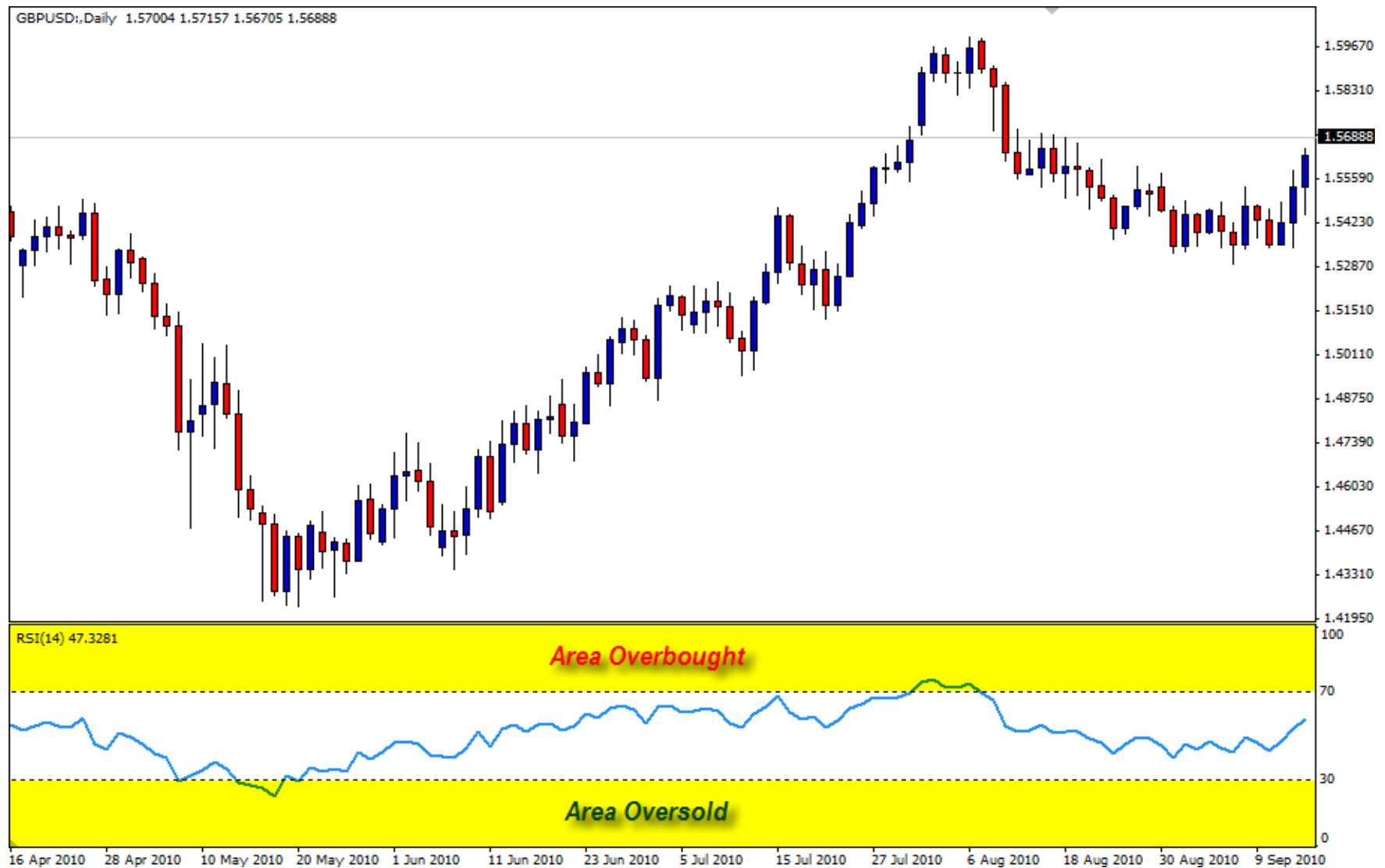
Category	Value
Category 1	Value 1
Category 2	Value 2
Category 3	Value 3
Category 4	Value 4
Category 5	Value 5
Category 6	Value 6
Category 7	Value 7
Category 8	Value 8
Category 9	Value 9
Category 10	Value 10
Category 11	Value 11
Category 12	Value 12
Category 13	Value 13
Category 14	Value 14
Category 15	Value 15
Category 16	Value 16
Category 17	Value 17
Category 18	Value 18
Category 19	Value 19
Category 20	Value 20
Category 21	Value 21
Category 22	Value 22
Category 23	Value 23
Category 24	Value 24
Category 25	Value 25
Category 26	Value 26
Category 27	Value 27
Category 28	Value 28
Category 29	Value 29
Category 30	Value 30
Category 31	Value 31
Category 32	Value 32
Category 33	Value 33
Category 34	Value 34
Category 35	Value 35
Category 36	Value 36
Category 37	Value 37
Category 38	Value 38
Category 39	Value 39
Category 40	Value 40
Category 41	Value 41
Category 42	Value 42
Category 43	Value 43
Category 44	Value 44
Category 45	Value 45
Category 46	Value 46
Category 47	Value 47
Category 48	Value 48
Category 49	Value 49
Category 50	Value 50
Category 51	Value 51
Category 52	Value 52
Category 53	Value 53
Category 54	Value 54
Category 55	Value 55
Category 56	Value 56
Category 57	Value 57
Category 58	Value 58
Category 59	Value 59
Category 60	Value 60
Category 61	Value 61
Category 62	Value 62
Category 63	Value 63
Category 64	Value 64
Category 65	Value 65
Category 66	Value 66
Category 67	Value 67
Category 68	Value 68
Category 69	Value 69
Category 70	Value 70
Category 71	Value 71
Category 72	Value 72
Category 73	Value 73
Category 74	Value 74
Category 75	Value 75
Category 76	Value 76
Category 77	Value 77
Category 78	Value 78
Category 79	Value 79
Category 80	Value 80
Category 81	Value 81
Category 82	Value 82
Category 83	Value 83
Category 84	Value 84
Category 85	Value 85
Category 86	Value 86
Category 87	Value 87
Category 88	Value 88
Category 89	Value 89
Category 90	Value 90
Category 91	Value 91
Category 92	Value 92
Category 93	Value 93
Category 94	Value 94
Category 95	Value 95
Category 96	Value 96
Category 97	Value 97
Category 98	Value 98
Category 99	Value 99
Category 100	Value 100

# RELATIVE STRENGTH INDEX

- Developed J. Welles wilder, the relative strength index (RSI) is a momentum oscillator that measures the speed and change of price movements.
  - **$Rs_i = 100 - 100/(1 + rs^*)$**   
Where RS = average of x days' up closes / average of x days' down closes.



# RELATIVE STRENGTH INDEX



# CROSSOVER

- Crossover is the point on a stock chart when a security and an indicator intersect.
- Crossovers are used by technical analysts to aid in forecasting the future movements in the price of a stock.

# Simple Moving Average (2-SMA's)

Daily Chart - S&P 500 Depository Receipts ETF (SPY)



