

3.3. Performing Remote Acquisition

Performing Remote Acquisitions

- Remote acquisitions are handy when you need to image the drive of a computer far away from your location
 - Or when you don't want a suspect to be aware of an ongoing investigation

Remote Acquisitions with Runtime Software

- Runtime Software offers the following shareware programs for remote acquisitions:
 - DiskExplorer for FAT
 - DiskExplorer for NTFS
 - HDHOST
- Preparing DiskExplorer and HDHOST for remote acquisitions
 - Requires the Runtime Software, a portable media device (USB thumb drive or floppy disk), and two networked computers
- Making a remote connection with DiskExplorer
 - Requires running HDHOST on a suspect's computer
 - To establish a connection with HDHOST, the suspect's computer must be:
 - Connected to the network
 - Powered on
 - Logged on to any user account with permission to run noninstalled applications
 - HDHOST can't be run surreptitiously



Fig: Displaying the contents of the HDHOST folder in Windows Exp



Fig: Selecting a connection type

- Making a remote acquisition with DiskExplorer
- After you have established a connection with DiskExplorer from the acquisition workstation
 - You can navigate through the suspect computer’s files and folders or copy data
- The Runtime tools don’t generate a hash for acquisitions

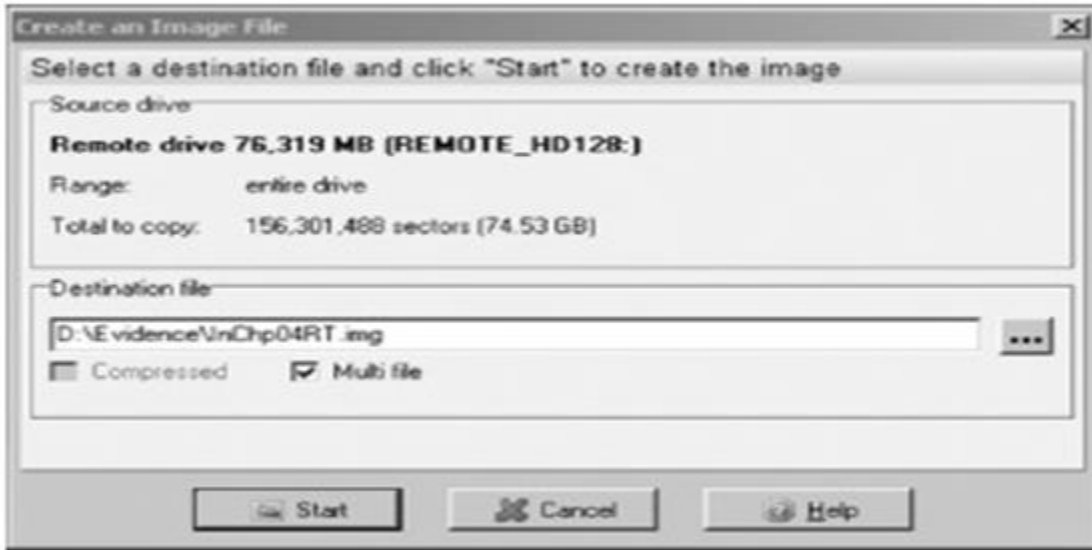


Fig: Create an Image file Dialog box

